



I wonder what is your favourite body part?

This might seem like a strange question, but really...which is the most important?

If you had to LOSE one part of your body or its ability, what would it be?

These can be tough questions because really we need all of our body parts to work together for our tasks. The same is true in a Church setting.

Have A

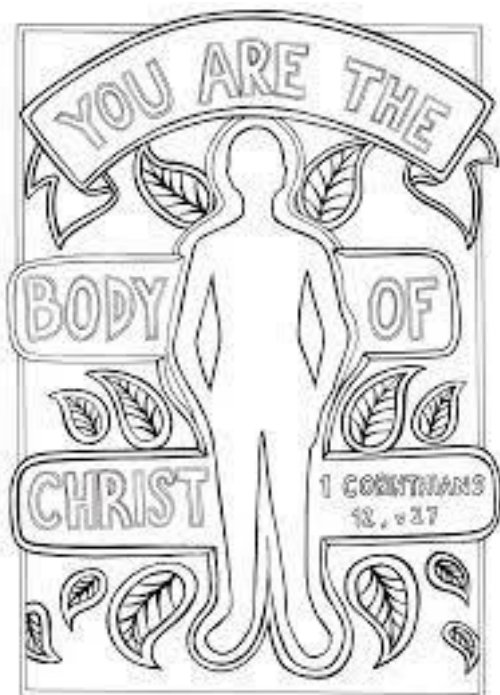
Go.....

Make a moving body

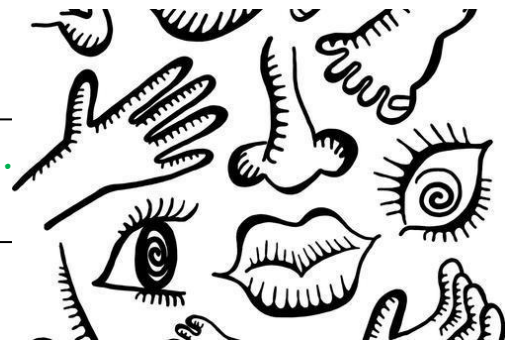


St Paul says it well.....

” Just as a body, though one, has many parts, but all its many parts form one body, so it is with Christ. For we were all baptized by one Spirit so as to form one body—whether Jews or Gentiles, slave or free—and we were all given the one Spirit to drink. Even so the body is not made up of one part but of many. - 1 Corinthians 12:12-14

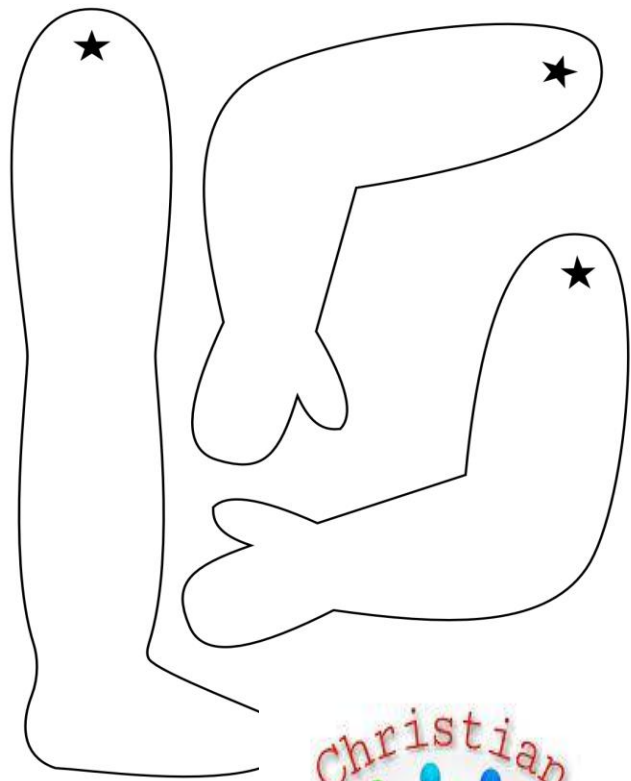
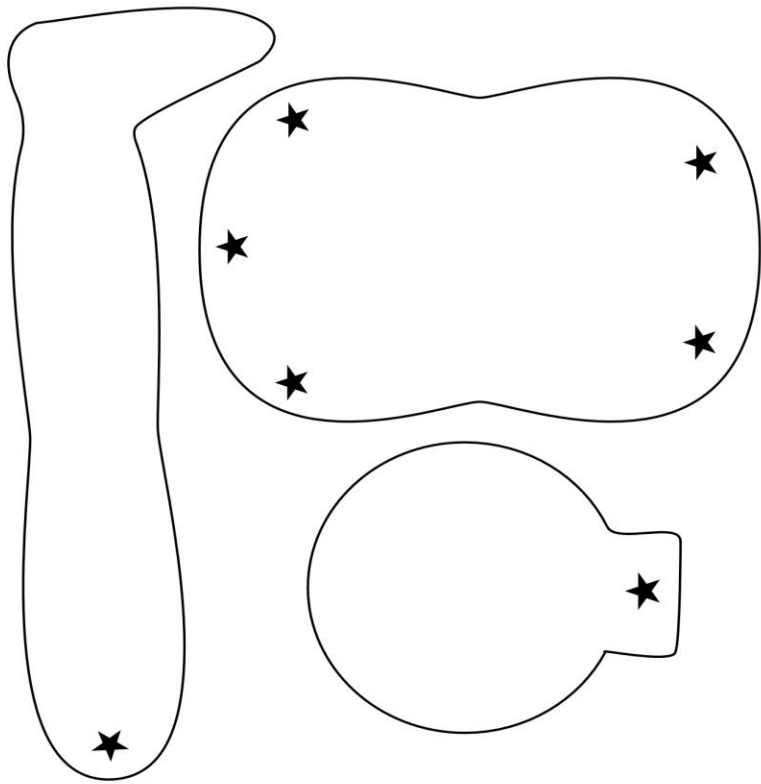


Many Parts
One Body!



I wonder why is it important to be part of a Church?

The church is not the only way to serve God, but it allows us to be one part of a whole group that serves Christ. That group is made up of us as individual people, and we all have unique abilities from God that can be used for Him.



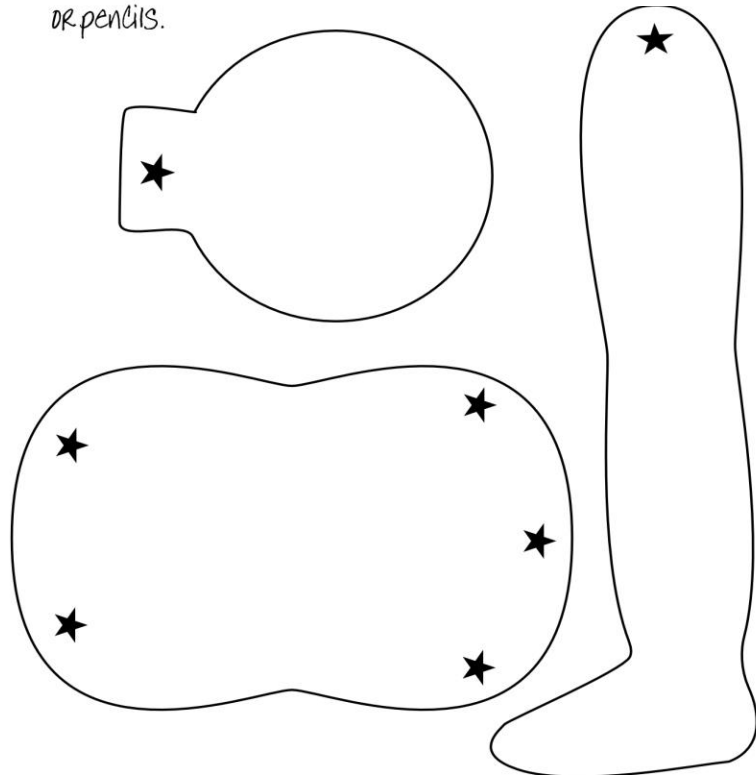
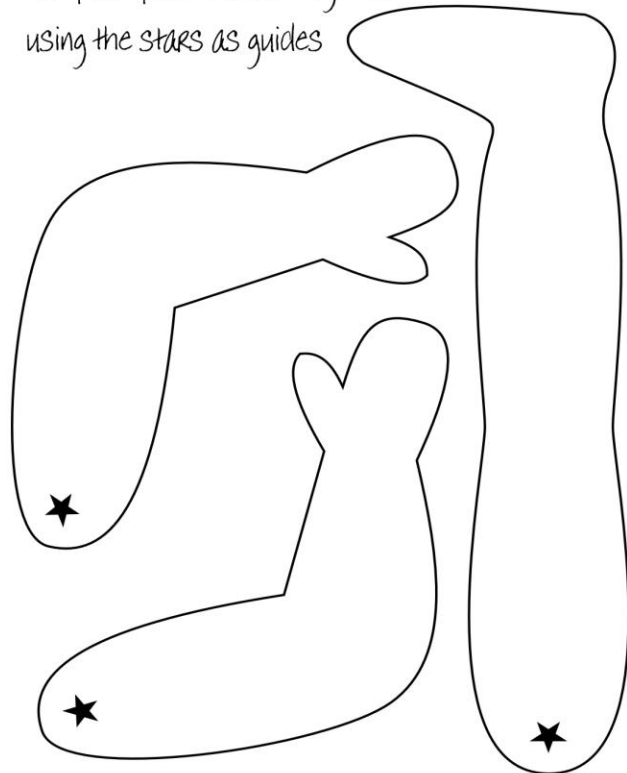
INSTRUCTIONS

Cut out the six body parts per child.
 Get the children to draw clothes
 on their human figure.
 Use push pins to attach together
 using the stars as guides



You will need...

- x 5 split pins per body
- a pair of scissors
- ± some colouring pens
OR pencils.



YOU ARE THE

BODY

OF

CHRIST

1 CORINTHIANS
12, v 27





THE HUMAN BODY

word find

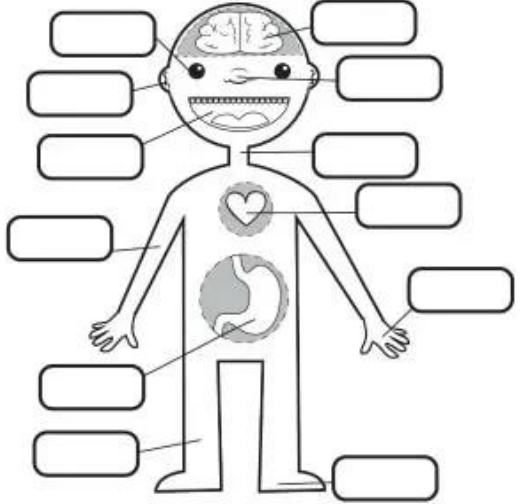


N	T	O	E	S	J	H	B	O	D	Y	W	M
C	I	T	E	W	D	O	O	L	B	O	P	S
H	D	A	T	W	I	E	J	R	G	F	O	S
S	C	Z	R	E	H	D	Z	Y	A	L	F	D
H	L	A	W	B	E	F	I	N	G	E	R	S
A	U	W	M	S	A	W	T	V	Z	V	O	M
N	B	G	C	O	R	Y	Z	Q	X	K	Q	U
D	M	S	E	K	T	B	T	Q	N	Q	L	M
S	T	E	C	V	O	S	F	E	V	G	O	O
U	O	Y	P	N	R	E	D	U	E	U	U	
O	H	E	E	S	O	N	E	C	T	F	S	E
R	Z	S	S	M	V	V	H	H	I	U	U	V
U	P	D	M	F	D	E	S	J	I	I	U	N

- | | | |
|-------|---------|---------|
| Blood | Eyes | Mouth |
| Body | Feet | Nose |
| Bones | Fingers | Stomach |
| Brain | Hands | Toes |
| Ear | Heart | Tongue |

www.itsybitsyfun.com

Match the labels to the parts of the body.



- | | | | |
|------|-------|---------|-------|
| NOSE | EYE | HEART | ARM |
| NECK | LEG | HAND | BRAIN |
| FOOT | MOUTH | STOMACH | EAR |

www.itsybitsyfun.com

If the whole body were an eye, how could it hear? If the whole body were an ear, how could it smell? God has placed each part in the body just as he wanted it to be. If all the parts were the same, how could there be a body? As it is, there are many parts. But there is only one body.

So the body is not made up of just one part. It has many parts. Suppose the body were just one part. "I am not a hand. So I don't belong to the body." By saying this it cannot stop being part of the body. And suppose the ear says, "I am not an eye. So I don't belong to the body." By saying this, it cannot stop being part of the body.

1 Corinthians 12:12-31a